

# State of Wyoming Corner Record

(In compliance with the **CORNER PERPETUATION AND FILING ACT**, Wyoming Statutes, 1997 Section 33-29-140 et. se., and the Rules and Regulations of the Board of Professional Engineers and Professional Land Surveyors)

Reverse side of this form may be used if more space is needed.

Record of original survey and citation of source of historical information (if corner is lost or obliterated). Description of corner monumentation evidence found and/or monument and accessories established to perpetuate the location of this corner. Sketch of relative location of monument, accessories, and reference points with course and distance to adjacent corner(s) (if determined in this survey). Method and rationale for re-establishment of lost or obliterated corner.

**RECORD:** Corner record by John Steil on Feb 21, 1989, replaced 50d spike with a 2.0 inch aluminum cap on 5/8x18 inch rebar.

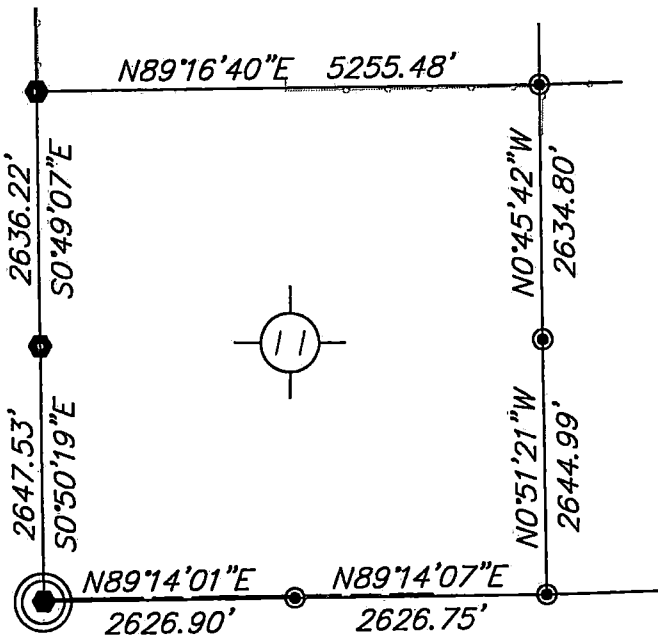
**FOUND:** 5/8x18 inch rebar bent flat and buried 0.2 ft., alum. cap missing.

**Re-monumentation:** 2.5 inch aluminum cap on 5/8x24 inch rebar at bent rebar position. Set cap 0.5 ft below gravel road. Set P-K nail and washer marked with 'PLS#5297 Ref. Point' in fence post at 50.7ft. E. and power pole at 44.8ft. N.W.

NAD83, position:

Point #	North	East	Elev.
1761152	346770.54	929414.66	5394.43

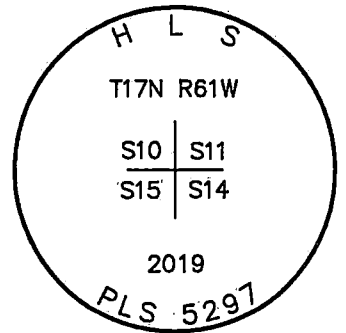
**NOTE:**  
BEARINGS AND DISTANCES SHOWN HEREON ARE BASED UPON GRID USING NAD83 WYOMING EAST ZONE AND TRIMBLE RB GPS OBSERVATION



### Monument Location

corner referenced this record =

LARAMIE COUNTY



### Monument Inscription

Date of Field Work: May 2, 2019

Office Reference: DRG-21814, Pt.1761152

### Cross Index Plat

	1	2	3	4	5	6	7	8	9	10	11	12	13	14	15	16	17	18	19	20	21	22	23	24	25
A																									
B																									
C		6		5		4		3		2		1													
D																									
E																									
F																									
G		7		8		9		10		11		12													
H																									
J																									
K																									
L		18		17		16		15		14		13													
M																									
N																									
O																									
P		19		20		21		22		23		24													
Q																									
R																									
S																									
T		30		29		28		27		26		25													
U																									
V																									
W																									
X		31		32		33		34		35		36													
Y																									
Z																									
	1	2	3	4	5	6	7	8	9	10	11	12	13	14	15	16	17	18	19	20	21	22	23	24	25

Firm/Agency, Address

this corner record provided by:

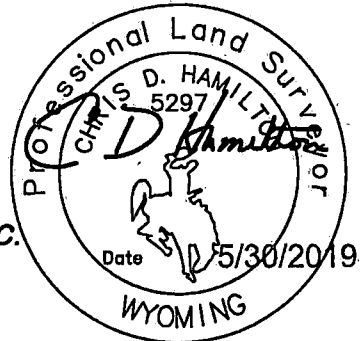
**HAMILTON  
LAND  
SURVEYING**

UNDER CONTRACT TO:



**DRG RIFFIN & ASSOCIATES, INC.**  
1414 ELK ST., SUITE 202  
ROCK SPRINGS, WY 82901  
(307) 362-5028

This corner record was prepared by me or under my direction and supervision.  
SEAL & SIGNATURE



RECP #: 753761

RECORDED 5/23/2019 AT 10:14 AM BK# 2622 PG# 1575  
Debra K. Lee, CLERK OF LARAMIE COUNTY, WY PAGE 1 OF 1

Debra Lee \_\_\_\_\_ Deputy  
County Clerk \_\_\_\_\_

STATE of WYOMING, Office of Clerk & Recorder, County of Laramie  
this block provided for county filing documentation

Corner Name: Southwest , Section: 11 , T 17N , R 61W , 6th P.M. , Cross-Index No.: J-17

SBRPEPLS/PLSW: March 1994; PLSW January 1998

County: LARAMIE , Wyoming